



Clockwise from Bottom Left
Installation of Bridge Preservation™ Bridge Deck Membrane (BDM); A worker installs Bridge Preservation™ BDM; Installation of Bridge Preservation™ Integrated Ballast Mat.

DENVER UNION STATION

Denver, Co



Completed System
The bridge deck after Bridge Preservation™ Integrated Ballast Mat installation.

Denver Rapid Transit District (RTD) has utilized the Bridge Preservation™ spray applied waterproofing membrane systems throughout the years for their light rail bridge decks. At the Denver Union Station, Bridge Preservation™ Bridge Deck Membrane (BDM) spray applied waterproofing membrane was installed, followed by the application of Bridge Preservation™ Integrated Ballast Mat, a seamless, spray applied ballast mat protection system. The spray applied ballast mat (Integrated Ballast Mat™) utilizes a proprietary filler combined with Bridge Preservation™ spray applied waterproofing membrane to create an extremely durable waterproofing and ballast

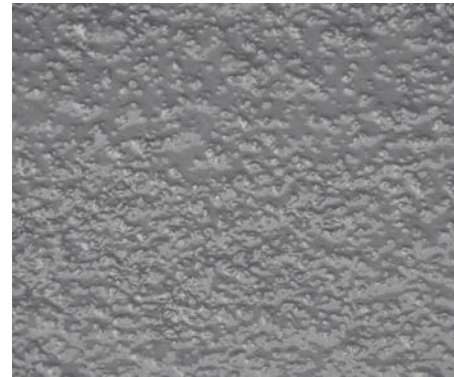
Project Information

Project Number: 09-002
Owner: Denver Union Station Project Authority
Project Size: 4,780 SF
General Contractor: Kiewit
Approved Applicator: NPW Contracting, Inc.

protection system. Starting at a minimum thickness of 250 mils, the Integrated Ballast Mat™ can be applied at various thickness on flat decks to create slope for water drainage.

Advantages:

- Completely seamless spray applied ballast mat protection system
- Chemically bonds to spray applied waterproofing membrane base coat
- Provides increased dielectric properties
- Provides additional waterproofing protection
- Can be applied at various thickness to create slope on flat decks
- Cost effective, similar to cost of conventional ballast protection board
- Made in America



Detail Shot
A close-up photograph showing details of the Bridge Preservation™ Integrated Ballast Mat.



Bridge Preservation

SERVING THE RAIL AND HIGHWAY MARKETS
(913) 321-9000 info@bridgepreservation.com