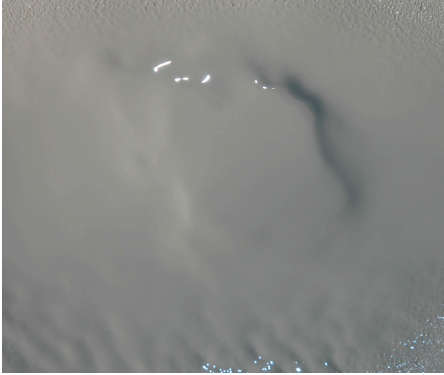




Clockwise from Bottom Left
Viaduct prior to surface preparation and waterproofing installation; Installation of the Articulus™ Expansion Joint System; Completed Culver Line station platform.

REHABILITATION OF THE CULVER LINE VIADUCT

New York City, NY



Filling Surface Voids
Bridge Deck Membrane (BDM) is capable of filling very rough surface voids, but requires more material to do so.

During the years of 2009 to 2012, Island Pavement Cutting Co., Inc. installed approximately 411,300 square feet of Bridge Preservation™ Bridge Deck Membrane and 2,957 linear feet of Articulus™ Expansion Joint on the Culver Line Viaduct.

Project Information
Project Number: S-34763
Owner: MTA NYC Transit
Project Size: 411,300 SF

In many areas of the viaduct, the concrete was heavily damaged and deteriorated, and would have required extremely extensive repairs to achieve the surface profile normally recommended by Bridge Preservation. As a surface becomes rougher with higher peaks and valleys, more material is required to coat the same area. The General Contractor decided it would be

faster and more economical to use additional waterproofing membrane in lieu of smoothing the surface through repairs. Surface preparation was performed to ensure that the waterproofing system would be applied to strong and sound (albeit rough) concrete. Correct surface preparation is the foundation of any successful waterproofing system.



Spray Application
Spray application of Bridge Deck Membrane (BDM) to 80 mils.

Because of the unique characteristics of spray-applied Bridge Deck Membrane, it to accommodate very rough surface profiles and still achieve successful bonding characteristics. Using Bridge Preservation™ products, Island Pavement Cutting Co., Inc. was able to achieve a highly tenacious bond to the surface, and ultimately, a successful waterproofing installation.



Bridge Preservation
SERVING THE RAIL AND HIGHWAY MARKETS
(913) 321-9000 info@bridgepreservation.com